

PRODUCT INFORMATION PACKET

Model No: 256TTDR16026

Catalog No: E197A

20 HP Close-Coupled Pump Motor, 3 phase, 1800 RPM, 230/460 V, 256JM Frame, ODP
JM Motors



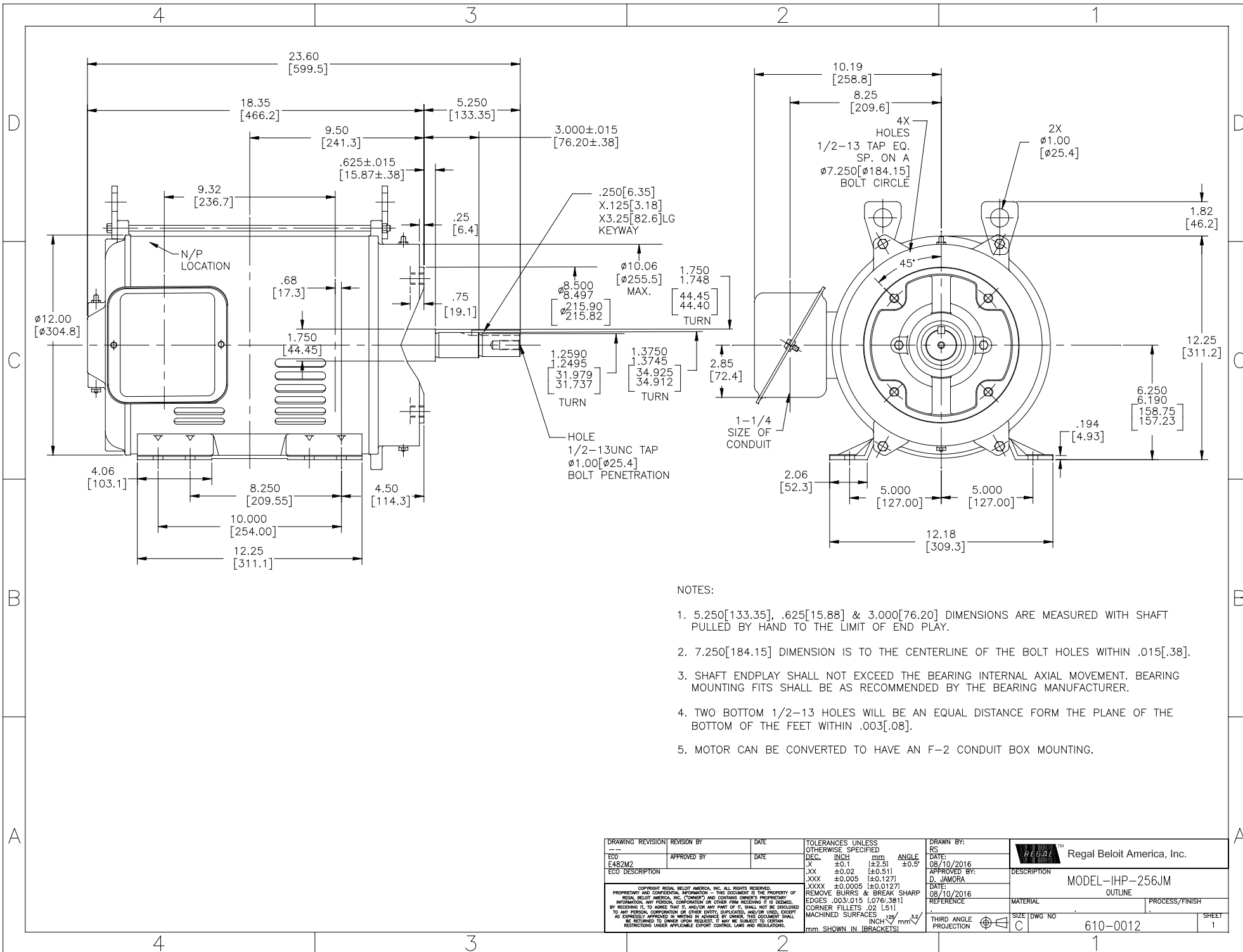
Nameplate Specifications

Output HP	20 Hp	Output KW	14.9 kW
Frequency	60 Hz	Voltage	230/460 V
Current	49.0/24.5 A	Speed	1770 rpm
Service Factor	1.15	Phase	3
Efficiency	93.6 %	Power Factor	80.5
Duty	Continuous	Insulation Class	B
Design Code	B	KVA Code	G
Frame	256JM	Enclosure	Drip Proof
Thermal Protection	No	Ambient Temperature	40 °C
Drive End Bearing Size	6309	Opp Drive End Bearing Size	6207
UL	Recognized	CSA	Y
CE	Y	IP Code	12

Technical Specifications

Electrical Type	Squirrel Cage Induction Run	Starting Method	Across The Line
Poles	4	Rotation	Reversible
Resistance Main	0 Ohms	Mounting	Rigid Base
Motor Orientation	Horizontal	Drive End Bearing	Ball
Opp Drive End Bearing	Ball	Frame Material	Rolled Steel
Shaft Type	JM	Overall Length	21.89 in
Shaft Diameter	1.625 in	Shaft Extension	5.28 in
Assembly/Box Mounting	F1/F2 CAPABLE		
Connection Drawing	80022802	Outline Drawing	610-0012

This is an uncontrolled document once printed or downloaded and is subject to change without notice. Date Created:14/10/2020



NOTES:

- 5.250[133.35], .625[15.88] & 3.000[76.20] DIMENSIONS ARE MEASURED WITH SHAFT PULLED BY HAND TO THE LIMIT OF END PLAY.
- 7.250[184.15] DIMENSION IS TO THE CENTERLINE OF THE BOLT HOLES WITHIN .015[.38].
- SHAFT ENDPLAY SHALL NOT EXCEED THE BEARING INTERNAL AXIAL MOVEMENT. BEARING MOUNTING FITS SHALL BE AS RECOMMENDED BY THE BEARING MANUFACTURER.
- TWO BOTTOM 1/2-13 HOLES WILL BE AN EQUAL DISTANCE FROM THE PLANE OF THE BOTTOM OF THE FEET WITHIN .003[.08].
- MOTOR CAN BE CONVERTED TO HAVE AN F-2 CONDUIT BOX MOUNTING.

DRAWING REVISION	REVISION BY	DATE	TOLERANCES UNLESS OTHERWISE SPECIFIED	DRAWN BY:	Regal Beloit America, Inc.	
---	---	---	DEC. INCH mm ANGLE	RS	Regal Beloit America, Inc.	
E482M2	APPROVED BY:	DATE:	X ±0.1 [±2.5]	DATE:	08/10/2016	
ECD DESCRIPTION			JXX ±0.02 [±0.51]	APPROVED BY:	D. JAMORA	
			JXXX ±0.005 [±0.127]	DATE:	08/10/2016	
<small>COPYRIGHT REGAL BELOIT AMERICA, INC. ALL RIGHTS RESERVED. REGAL BELOIT AMERICA, INC. ("OWNER") AND CONTAINS OWNER'S PROPRIETARY INFORMATION. ANY PERSON, CORPORATION OR OTHER FIRM RECEIVING IT IS DEMAND, BY RECEIVING IT, TO AGREE THAT IT, AND/OR ANY PART OF IT, SHALL NOT BE DISCLOSED TO ANY PERSON, CORPORATION OR OTHER ENTITY, SUPPLIER, AND/OR USER, WITHOUT AS EXPRESSLY APPROVED IN WRITING BY OWNER. THIS DOCUMENT SHALL BE RETURNED TO OWNER UPON REQUEST. IT MAY BE SUBJECT TO CERTAIN RESTRICTIONS UNDER APPLICABLE EXPORT CONTROL LAWS AND REGULATIONS.</small>			REMOVE BURRS & BREAK SHARP EDGES .003/015 [0.076/.381] CORNER FILLETS .02 [0.51] MACHINED SURFACES	REFERENCE:	MATERIAL:	PROCESS/FINISH:
			mm SHOWN IN BRACKETS	THIRD ANGLE PROJECTION	SIZE DWG NO	SHEET
					610-0012	1

Data Sheet

Date: 19-06-2017
 Customer: _____
 Attention: _____
 Submitted by: FAREEDA DUDEKULA



256TTDR16026

Submittal

Data @ 460 V

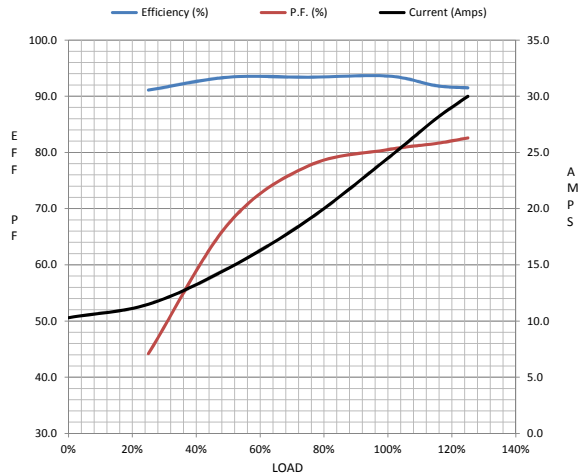
Motor Load Data

Load	0%	25%	50%	75%	100%	115%	125%	LR
Current (Amps)	10.3	11.5	14.7	19.0	24.5	28.0	30.0	140
Torque (ft-lb)	0.00	14.5	29.0	43.5	58.0	66.7	72.5	115
RPM	1800	1792	1786	1777	1770	1,765	1755	0
Efficiency (%)		91.1	93.4	93.4	93.6	91.9	91.5	
P.F. (%)	6.1	44.2	67.3	77.6	80.5	81.6	82.6	0.0

Motor Speed Data

	LR	Pull-Up	BD	Rated	Idle
Speed (RPM)	0	885	1656	1770	1800
Current (Amps)	140	135	84.0	24.5	10.3
Torque (ft-lb)	115	113	160	58.0	0.00

Information Block				
HP	20.0			
Sync. RPM	1800			
Frame	256			
Enclosure	DP			
Construction	TDR			
Voltage	30/460#190/38V			
Frequency	60 Hz			
Design	B			
LR Code letter	G			
Service Factor	1.15			
Temp Rise @ FL	35 ° C			
Duty	CONT			
Ambient	40 ° C			
Elevation	1,000 feet			
Rotor/Shaft wk ²	0.00 Lb-Ft ²			
Ref Wdg	BHR4T01 NONE			
Sound Pressure @ 1M	0 dBA			
VFD Rating	NONE			
Outline Dwg	610-0013			
Conn. Diag	80022802			
Additional Specifications:				
0				
365THFS8036				
EQUIV CKT (OHMS / PHASE)				
R1	R2	X1	X2	Xm
0.0000	0.0000	0.0000	0.0000	0.0000



Speed -Torque Curve

